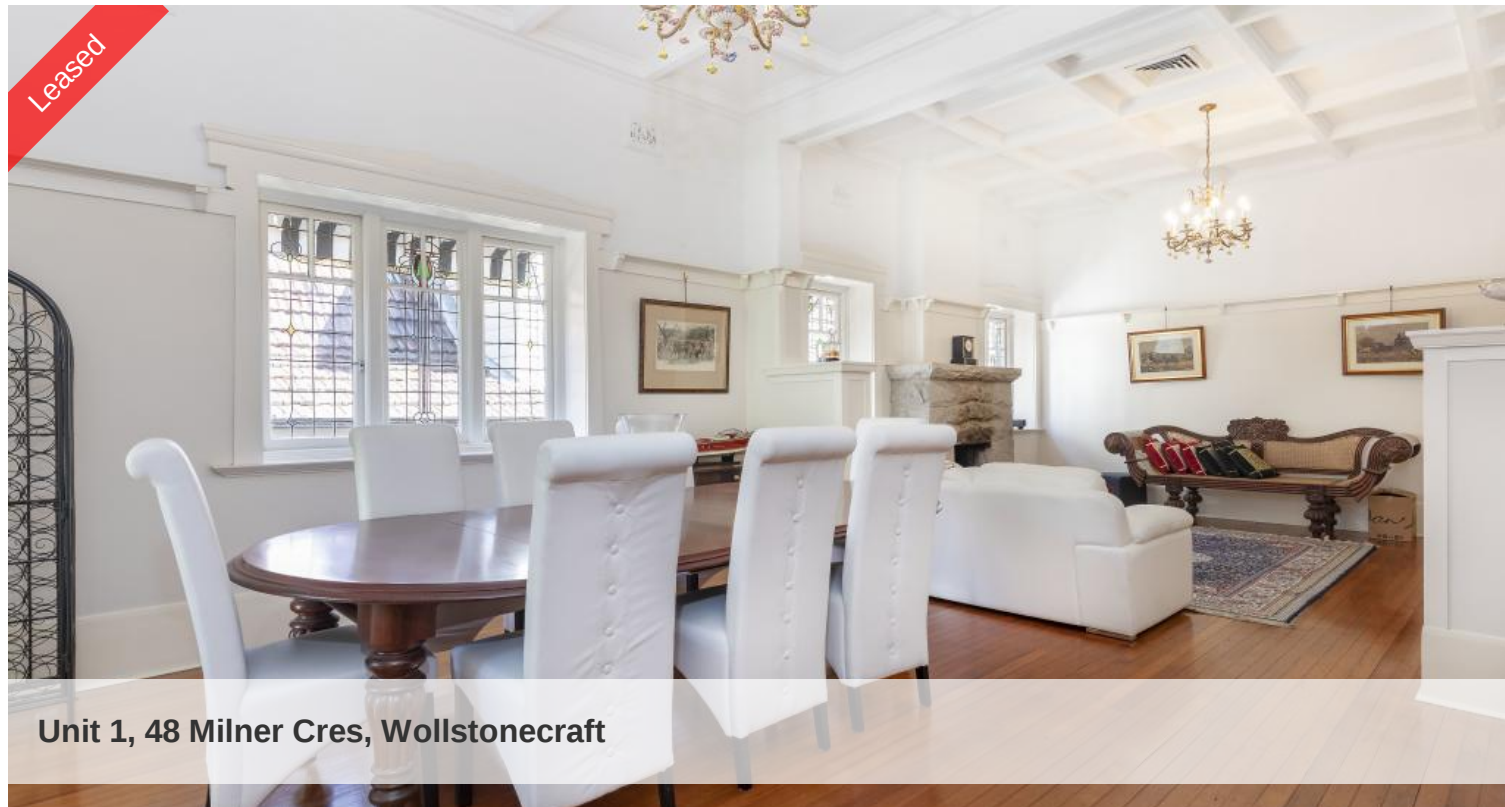


Leased



Unit 1, 48 Milner Cres, Wollstonecraft



## GRAND FEDERATION STYLE DUPLEX HOME

Boasting enormous living areas throughout, this federation style duplex home offers superior size and charm with 3 bedrooms plus a study, huge formal and informal living and dining and multiple outdoor entertaining areas.

### Accommodation

- 3 bedrooms + study
- Huge master bedroom with walk-in robe and ensuite bathroom
- Grand formal living and dining with 12 foot ceilings
- Open plan second casual living and dining
- Sun-drenched kitchen with gas cooking

### Features

- North facing entertaining deck
- Second under cover deck with 8 person spa
- Reverse cycle ducted air con
- Polished timber floors
- Internal laundry
- Huge basement storage
- Lock-up garage
- Walk to Wollstonecraft rail and Crows Nest Village
- Pet friendly

Available now.

🛏 3 🚿 2 🚗 1

**Price** \$1,350 per week  
**Property Type** Rental  
**Property ID** 1041

### AGENT DETAILS

### OFFICE DETAILS

Crows Nest  
Shop 7, 20 Burlington Street Crows  
Nest NSW 2065 Australia  
02 9906 2011

**N**  
NORTHSIDE  
REALTORS

Please register for inspections via the 'book inspection' or 'email agent' buttons so you can be advised on inspection times and be notified of any inspection changes.

*The above information provided has been furnished to us by the vendor/s. We have not verified whether or not that information is accurate and do not have any belief in one way or the other in its accuracy. We do not accept any responsibility to any person for its accuracy and do no more than pass it on. All interested parties should make and rely upon their own inquiries in order to determine whether or not this information is in fact accurate.*